



堅尼地城前摩星嶺平房區公營房屋發展之工地平整及基礎設施工程

Site Formation and Infrastructure Works for Public Housing Development at Ex-Mount Davis Cottage Area in Kennedy Town

歡迎參閱堅尼地城前摩星嶺平房區公營房屋發展之工地平整及基礎設施工程（合約編號：SD/2022/01）的第五期通訊。本通訊以季刊形式旨在提供是項工程的進度及相關工程資訊。

Welcome to the 5th issue of the Newsletter for Site Formation and Infrastructure Works for Public Housing Development at Ex-Mount Davis Cottage Area in Kennedy Town (Contract No.: SD/2022/01). This Newsletter provides you with the construction progress and other relevant information about the project on a quarterly basis.

工程簡介

Project Information

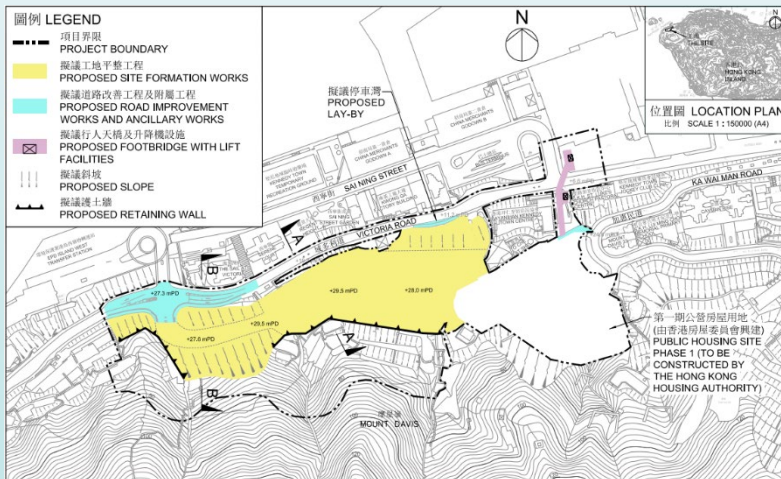
為配合堅尼地城的公營房屋發展，我們現正於前摩星嶺平房區進行工地平整工程，以及相關的基礎設施工程。

To facilitate the public housing development in Kennedy Town, we carry out site formation works and associated infrastructure works at Ex-Mount Davis Cottage Area.

工程動工日期：2022年10月31日 Contract Commencement Date: 31 October 2022

預計完工日期：2026年底 Anticipated Completion Date: End 2026

工程範圍 Scope of Works



項目主要工程範圍包括：

- 進行工地平整和建造相關的護土牆和斜坡；
- 建造一條橫跨域多利道的行人天橋和升降機設施，以及相關行人路；
- 在域多利道建造停車灣和進行相關道路改善工程；
- 進行其他相關附屬工程，包括排水、排污、供水及環境美化工程。

The main scope of works includes:

- Site formation works and construction of associated retaining walls and slopes;
- Construction of a footbridge with lift facilities across Victoria Road, and associated footpath;
- Construction of a lay-by at Victoria Road and associated road improvement works;
- Ancillary works including drainage, sewerage, waterworks and landscaping works.

工程進度 Project Progress

正開展中的工程包括：

Works in progress include:



柔性防護網安裝工程
Installation of Flexible Barrier



削坡工程
Slope Cutting



橋墩打樁工程
Piling Works for Bridge Pier Construction



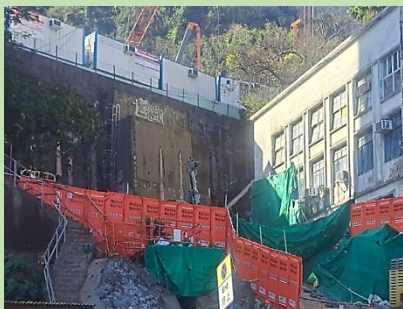
挖掘及安裝挖掘與側向支撐系統
Excavation and Installation of Excavation and Lateral Support System

臨時交通措施 Temporary Traffic Arrangement



- 為配合升降機塔的建設工程，聖路加教堂外部份行人路段已臨時局部封閉，以保障公眾安全；
- 教堂外的通道會保持至少2米寬，方便行人通過。
- To facilitate the construction of the lift tower, a section of the footpath outside St. Luke's Church has been temporarily closed for public safety;
- The pedestrian walkway outside the church will be kept at least 2 meters wide to facilitate the passage of pedestrians.

紓減環境影響措施 Environmental Mitigation Measures



設置可重覆使用的隔音屏障
Installation of Reusable
Noise Barriers



塵埃控制措施
Dust Control Measures

- 在工程進行期間，工地周邊設置可重覆使用的隔音屏障，以盡量減低噪音；
- 於工地使用灑水裝置，避免塵土飛揚。
- Install reusable noise barriers near the site area to minimize noise level during construction;
- Use of sprinklers to minimise dust generation.

未來三個月展開的工程 Construction Works in the Coming Three Months

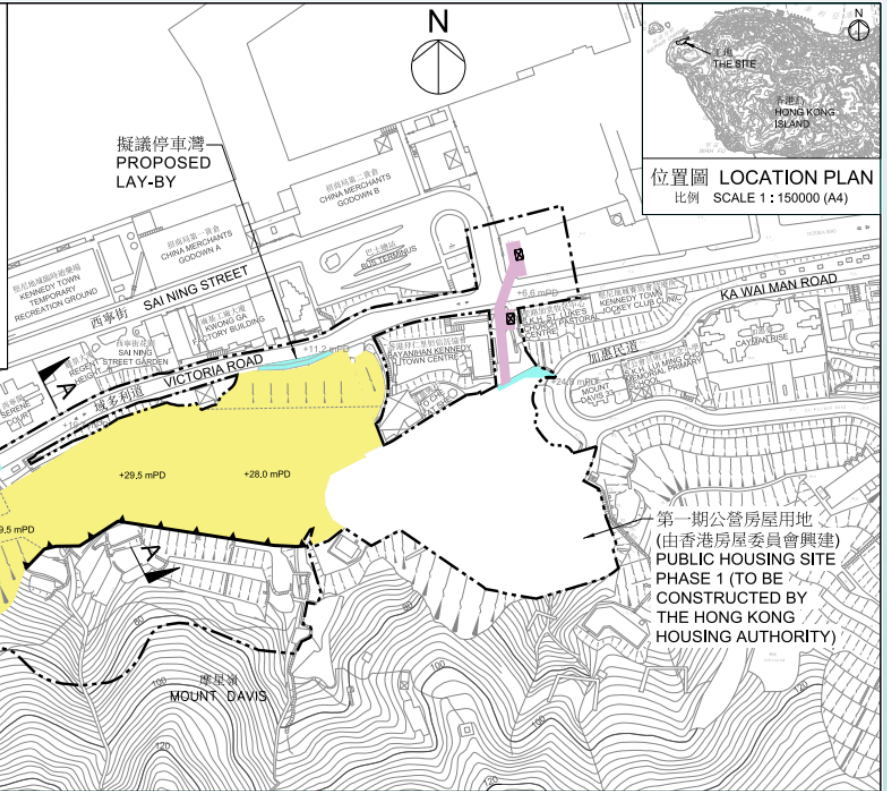
在未來三個月，我們將繼續進行打樁工程、斜坡加固工程、擋土牆挖掘工程、柔性防護網安裝工程、混凝土泥石壩建造工程。另外，我們正在進行升降機塔的建設，包括橋墩打樁工程。

In the coming three months, we will continue with piling, slope upgrading and excavation works for the construction of retaining walls, flexible barriers and rigid barriers. In addition, we are carrying out the construction of lift towers, which will involve piling works for bridge pier construction.

工程範圍 Scope of Works

圖例 LEGEND

- 項目界限
PROJECT BOUNDARY
- 擬議工地平整工程
PROPOSED SITE FORMATION WORKS
- 擬議道路改善工程及附屬工程
PROPOSED ROAD IMPROVEMENT WORKS AND ANCILLARY WORKS
- 擬議行人天橋及升降機設施
PROPOSED FOOTBRIDGE WITH LIFT FACILITIES
- 擬議斜坡
PROPOSED SLOPE
- 擬議護土牆
PROPOSED RETAINING WALL



項目主要工程範圍包括：

- 進行工地平整和建造相關的護土牆和斜坡；
- 建造一條橫跨域多利道的行人天橋和升降機設施，以及相關行人路；
- 在域多利道建造停車灣和進行相關道路改善工程；
- 進行其他相關附屬工程，包括排水、排污、供水及環境美化工程。

The main scope of works includes:

- Site formation works and construction of associated retaining walls and slopes;
- Construction of a footbridge with lift facilities across Victoria Road, and associated footpath;
- Construction of a lay-by at Victoria Road and associated road improvement works;
- Ancillary works including drainage, sewerage, waterworks and landscaping works.

工程進度 Project Progress

正開展中的工程包括：

Works in progress include:



排水渠改道挖掘工程
Excavation Works for
Drainage Diversion



柔性防護網安裝工程
Installation of Flexible
Barrier



微型樁打樁工程
Installation of Mini
Piles



安裝挖掘與側向支撐系統上的錨杆
Installation of Tieback of
Excavation and Lateral
Support System

派發利是封活動

Distribution of Envelopes for Red Packets at Lunar New Year



為對鄰近社區表達關懷，工程代表在農曆新年前夕與鄰近持分者歡慶新年，並派發利是封以示祝福。

To express our care for the nearby community, our site representatives celebrated Lunar New Year with nearby stakeholders in advance. We also presented envelopes for red packets as a gesture of blessing.

工程小知識 Construction Trivia - 智能手錶 Smart Watch



- 智能手錶能實時監測工人心率、靜止狀態，並配有SOS求救及位置和軌跡追蹤功能；
- 手錶可經由內置SIM卡發送即時數據及警報到遠程系統，並自動發送短訊或電郵報告予地盤監督人員作進一步了解；
- 實時數據會以加密訊號形式發送到雲端平台或公司內部系統以供查閱；
- 此外，當配戴智能手錶的工人進入已安裝接近傳感器的流動機械操作範圍時，流動機械操作員便會接到警報及停止操作，以避免事故及碰撞。



- The smart watch can monitor in real-time of workers' heart rates and standstill. It is also equipped with SOS alert, and location & path tracking functions;
- Watches can send real-time data and alerts to the remote system through built-in SIM cards, and automatically send SMS or email reports to site supervisors for further verification;
- Encrypted real-time data can be assessed through the cloud platform or the internal system of the company for monitoring purposes.
- Moreover, when a worker wearing a smart watch enters the operating range of mobile machinery with proximity sensor installed, the mobile machinery operator will receive an alert to stop the operation, thereby reducing the risk of accidents and collisions.

資訊與聯絡 Information & Enquiries

如對位於加惠民道的第一期公營房屋工程項目有任何疑問或意見，可透過以下方法聯絡相關部門：

Should you have any enquiries or comments on Public Housing project Phase 1 at Ka Wai Man Road, please contact the Housing Department via the following:

- 房屋署熱線 / Housing Department Hotline ☎ : 9090 7713

如對本工程項目有任何疑問或意見，可透過以下方法聯絡我們：

Should you have any enquiries or comments on the project, please contact us via the following:

- 24小時熱線 / 24-hour Hotline ☎ : 9129 1080